

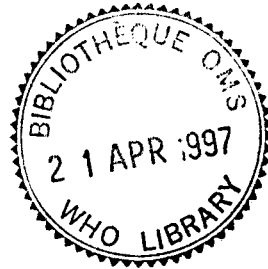
DISTR.: LIMITED  
WHO/CDR/95/12.G  
ORIGINAL: ENGLISH

WC 18  
95CD-7  
c.2

## **CDD/ARI Programme Management**

### **A Training Course**

# **FLOWCHART**



**WORLD HEALTH ORGANIZATION**  
**DIVISION OF DIARRHOEAL AND**  
**ACUTE RESPIRATORY DISEASE CONTROL (CDR)**

1995



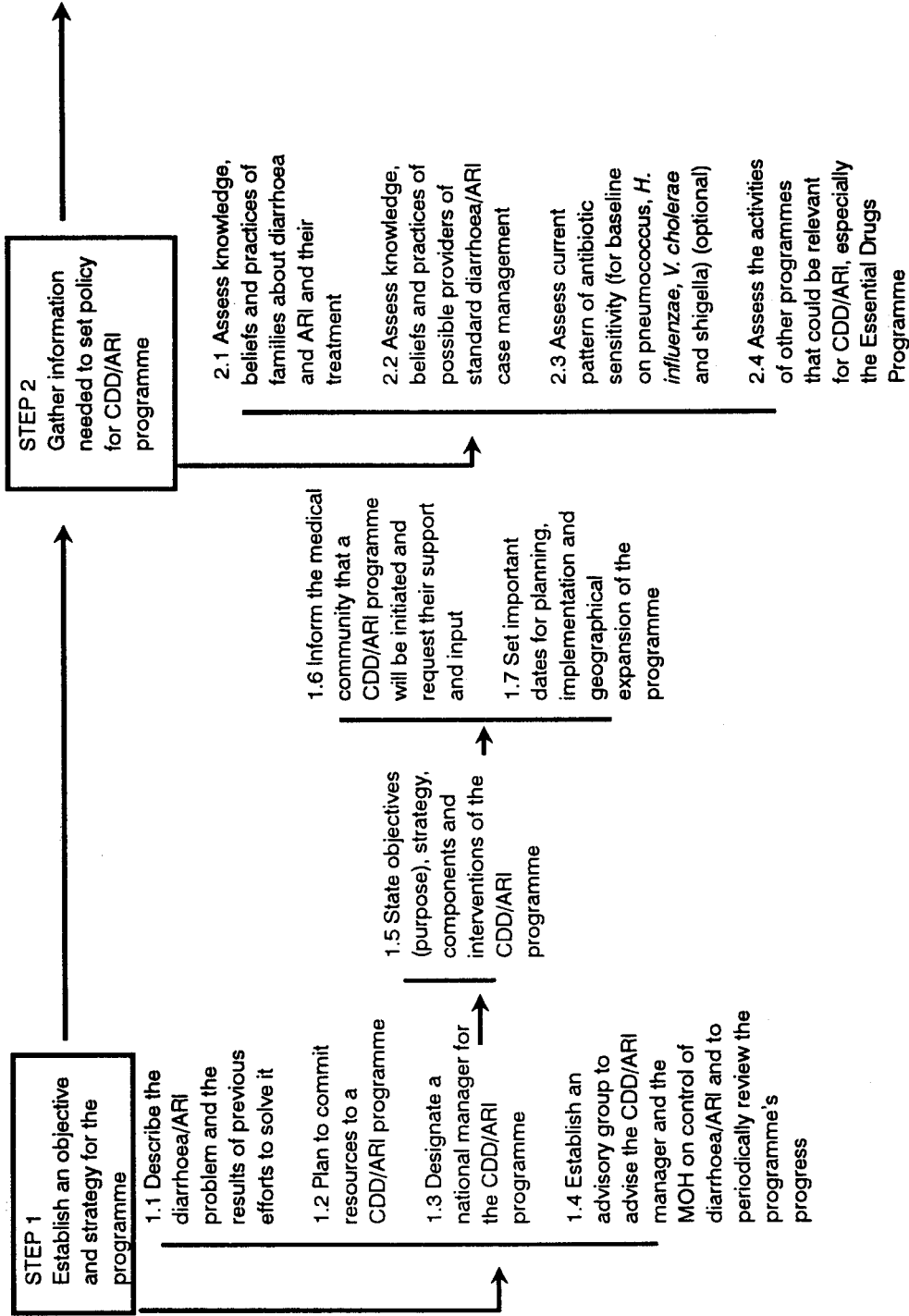
RR

WC 18  
95 CD-7  
c 2

© World Health Organization 1995

This document is not issued to the general public, and all rights are reserved by the World Health Organization (WHO). The document may not be reviewed, abstracted, quoted, reproduced or translated, in part or in whole, without the prior written permission of WHO. No part of this document may be stored in a retrieval system or transmitted in any form or by any means - electronic, mechanical or other - without the prior written permission of WHO.

# CDD/ARI Programme Management Flowchart



WORLD HEALTH ORGANIZATION  
 DIVISION OF DIARRHOEAL AND  
 ACUTE RESPIRATORY DISEASE CONTROL (CDR)

**STEP 3**  
Establish or revise national policy for the CDD/ARI programme

3.1 Determine the stage of the programme in terms of case management and decide what should be the emphasis of programme activities

3.2 Make policy on key elements of standard diarrhoea and ARI case management

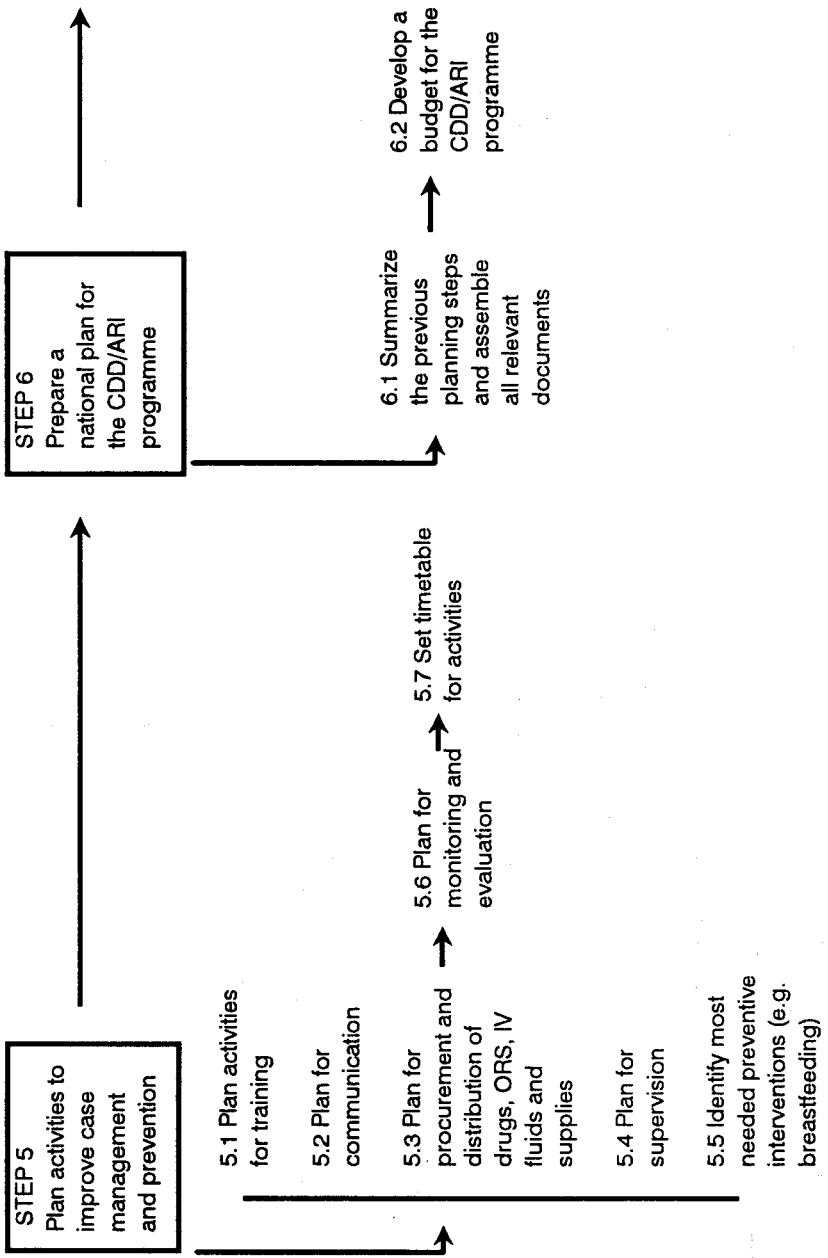
3.3 Develop standard CDD/ARI case management guidelines

**STEP 4**  
Plan for improvements in case management and set targets

4.1 Set subtargets appropriate for the stage of the programme

4.2 Set national pneumonia and diarrhoea mortality reduction targets





## STEP 7

Develop resources and systems of support for the programme

- 7.1 Identify reputable supplies of antibiotics, ORS and other supplies
- 7.2 Develop capability to produce or obtain ORS
- 7.3 Obtain antibiotics, ORS and other case management supplies
- 7.4 Assess the systems of the MOH and the Essential Drugs Programme for distribution, transport and storage of antibiotics, ORS and other case management supplies, and push for improvements if needed
- 7.5 Ensure that supervisory staff have the resources and support they will need for supervising CDD/ARI activities
- 7.6 Develop involvement of the medical community in implementation of standard diarrhoea and ARI case management
- 7.7 Develop, pretest and revise educational and promotional messages and materials.
- 7.8 Develop/adapt training materials and obtain other resources needed to train health staff and their trainers
- 7.9 Print data collection forms, patient forms, other forms (e.g. referral forms) needed to train health staff and their trainers
- 7.10 Establish CDD/ARI training sites
- 7.11 Develop/adapt materials for curricula of medical, nursing and other health worker schools and plan for incorporating these into curricula
- 7.12 Develop laboratory capabilities to monitor antibiotic sensitivity (optional)
- 7.13 Obtain necessary funds for all activities. If funds cannot be obtained, revise the programme plan.

## STEP 8

Train personnel

- 8.1 Provide training in standard diarrhoea/ARI case management to physicians and nurses at health facilities and hospitals
- 8.2 Provide training in standard diarrhoea/ARI case management to community-based practitioners
- 8.3 Provide managerial training to supervisors of health areas who are responsible for diarrhoea/ARI case management
- 8.4 Ensure specialized training of other personnel as needed (e.g. staff responsible for drug distribution)
- 8.5 Assist medical, nursing and other health worker schools to include standard diarrhoea/ARI case management in their curricula

**STEP 9**  
Implement and manage programme activities

- 9.1 Provide standard diarrhoea/ARI case management and educate families on home care
- 9.2 Maintain and distribute antibiotics, ORS and other supplies
- 9.3 Monitor quality of case management at different levels to ensure safety and effectiveness
- 9.4 Monitor programme activities
- 9.6 Monitor pathogens for antibiotic sensitivity (optional)
- 9.7 Collect and analyze data for evaluating CDD/ARI indicators

9.5 Provide feedback and solve problems

- 9.8 Revise plans and policies as needed and inform personnel
- 9.9 Initiate collection of more data as necessary

**STEP 10**  
Evaluate the programme

- 10.1 Decide what to evaluate
- 10.2 Identify data needed and data sources
- 10.3 Analyze results from review of records (e.g. total deaths, staff trained)
- 10.4 Summarize and analyze results of monitoring programme activities
- 10.5 Conduct household surveys and analyze results
- 10.6 Conduct health facility and health provider surveys and analyze results
- 10.7 Conduct special studies and analyze results

- 10.8 Interpret evaluation results from all sources
- 10.9 Describe the current status of CDD/ARI indicators
- 10.10 Use evaluation results to revise or make new plans
- 10.11 Provide feedback and solve problems

