

RELEVÉ ÉPIDÉMIOLOGIQUE HEBDOMADAIRE WEEKLY EPIDEMIOLOGICAL RECORD

34^e ANNÉE

34th YEAR

SOMMAIRE	Page	CONTENTS
Notifications de maladies quaranténaires	50	Notifications of quarantinable diseases
Maladies quaranténaires Zones infectées au 29 janvier 1959	54	Quarantinable diseases: Infected areas on 29 January 1959
Choléra en 1958	57	Cholera en 1958
Stations transmettant les bulletins épidémiologiques radio-télégraphiques de l'OMS	60	Wireless Stations transmitting WHO Radio-Telegraphic Epidemiological Bulletin

Ce Relevé contient les renseignements reçus des administrations sanitaires nationales par l'OMS en son siège, ses bureaux régionaux, à Alexandrie et Washington, et la Station d'information épidémiologique de Singapour.

Les notifications prescrites par le Règlement sanitaire international et les accords sanitaires internationaux en vigueur, concernant les mesures quaranténaires, les vaccinations et autres sujets, sont publiées telles qu'elles sont reçues des gouvernements, même lorsqu'elles semblent dépasser les dispositions de cette législation. Dans ce dernier cas, le gouvernement intéressé est averti des divergences constatées.

Les administrations sanitaires sont invitées à présenter toute remarque à l'adresse suivante :

Quarantaine internationale
Organisation mondiale de la Santé
Palais des Nations
Genève

Adresse télégraphique : EPIDNATIONS GENÈVE.

This Record is compiled from information received from national health administrations, by WHO Headquarters, Regional Offices at Alexandria and Washington, and the Epidemiological Intelligence Station at Singapore.

Notifications required under the International Sanitary Regulations and existing international sanitary agreements are, in respect of quarantine measures, vaccination and other items, published as received from reporting governments even though the contents of such notifications appear to be in excess of the provisions of that legislation. In the latter event, the attention of the government concerned will be drawn to discrepancies.

Health administrations are invited to address their comments to :

International Quarantine
World Health Organization
Palais des Nations
Geneva

Telegraphic address : EPIDNATIONS GENÈVE.



ORGANISATION MONDIALE DE LA SANTÉ
WORLD HEALTH ORGANIZATION

GENÈVE

30 JANVIER 1959

NOTIFICATIONS

de peste, choléra, fièvre jaune, variole, typhus et fièvre récurrente, aux termes de la législation sanitaire internationale

reçues du 23 au 29 janvier 1959

of plague, cholera, yellow fever, smallpox, typhus and relapsing fever under International Sanitary Legislation

received from 23 to 29 January 1959

Explication des signes utilisés — Explanation of symbols used

- Notification reçue d'un gouvernement aux termes de l'article 3 du Règlement sanitaire international indiquant qu'une circonscription est devenue infectée à la date donnée.
Notification received under Article 3 of the International Sanitary Regulations from the Government that the area became an infected local area on the date indicated.
- Notification reçue d'un gouvernement aux termes de l'article 6 du Règlement sanitaire international indiquant qu'une circonscription était indemne à la date donnée.
Notification received under Article 6 of the International Sanitary Regulations from the Government that the area was free from infection on the date indicated.

- ... Chiffres non encore disponibles — Figures not yet received
- (A) Aéroport — Airport
- (P) Port maritime ou fluvial — Maritime or river port
- i Cas importé — Imported case
- p Chiffres préliminaires — Preliminary figures
- r Chiffres révisés — Revised figures
- s Cas suspect — Suspected case

PESTE — PLAGUE	
Afrique — Africa	
	C D
KENYA	28.XII-3.I
Central Province . . .	3 3

Amérique — America	
PÉROU — PERU	
	C
Dpto. Piura Prov. Païta	
Dto. El Archal . 19.XII-1.I	2

Asie — Asia	
BIRMANIE — BURMA	
	18-24.I
.....	1 1

CHOLÉRA — CHOLERA			
Asie — Asia			
	C	D	C D
INDE — INDIA	11-17.I	18-24.I	
Calcutta (PA) ¹	0	0	4 0
Madras (PA)	65	15

¹ A l'exclusion de la circonscription de l'aéroport de Dum-Dum. — Excl.: Local area of Dum Dum airport.

	C	D	C	D	C	D
Andhra Pradesh State	21-27.XII	28.XII-3.I	4-10.I			
Districts						
East Godavari . . .	21p	16p	8p	5p
Guntur	8p	7p	12p	5p
Krishna	3p	2p	7p	4p
Nellore	33p	14p	23p	14p
West Godavari . . .	2p	2p

	C	D	C	D	C	D
INDE (suite)	21-27.XII	28.XII-3.I	4-10.I			
INDIA (ctd)						
Bombay State						
Sholapur, District	2p	1p		
Madras State						
Chingleput, Dist.	3p	0p	1p	0p	23p	11p
Mysore State						
Dharwar, District	1p	0p		
Orissa State						
Districts						
Balasore	15p	5p		
Ganjam	24p	13p	10p	4p		
Punjab State						
Karnal, District □ 22.I						
West Bengal State						
Districts						
Burdwan	1	0		
Hooghly	0	0	1p	1p
Bombay State						
Surat, District	4	2				
Mysore, State						
Chitaldrug, District . . .	3	4				
PAKISTAN	11-17.I	18-24.I				
Chalna (P)	5	3	0	0		
Dacca (A)	2	2	6	4		
East Pakistan	465	332	408	256		

THAÏLANDE — THAILAND		C	D
Bangkok (PA) & Thonburi Prov.		65	0
Provinces			
Angthong		5	1
Ayuthya		5	1
Chachoengsao		1	0
Chainat		1	0
Nakhon Sawan		9	5
Pathumthani		1	0
Phetchburi		7	1
Phitsnulok		2	1
Ratchburi		4	0
Samut Prakan		9	5
Samut Sakhon		2	0
Samut Songkhram		12	4
Sukhothai		6	2

FIÈVRE JAUNE DE BROUSSE JUNGLE YELLOW FEVER		C	D
Amérique — America			
COLOMBIE — COLOMBIA	9.XII ¹		
Santander, Dpto.			
Velez, Mun.		1	1

¹ Début de la maladie: Début décembre. — Onset of disease: early December.
Décès/Death: 9.XII.

VARIOLE — SMALLPOX			
Afrique — Africa			
	C	D	C D
AFRIQUE OCCIDENTALE FRANÇAISE	6-12.I	13-19.I	
FRENCH WEST AFRICA			
DAHOMÉY			
Cercles			
Abomey	1	0
Abomey: Cové, Subd.	6	0
Savalou	2	0

VARIOLE (suite)
SMALLPOX (continued)

<i>Afrique (suite) — Africa (continued)</i>			
	C	D	C D
AFRIQUE OCCIDENTALE FRANÇAISE	6-12.I		13-19.I
FRENCH WEST AFRICA			
HAUTE-VOLTA			
Kongoussi, Cercle . . .	1	0
CÔTE D'IVOIRE			
<i>Cercles</i>			
Abengourou		1	0
Abidjan: Treichville . .		1	0
Daloa		1	0
Gagnoa		2	0
Grand-Lahou		5	0
Man		3	0
Sassandra		5	0
Séguéla		1	0
GHANA			
<i>Trans-Volta/Togoland Region</i>			
<i>Ho District</i>			
Kpandu		7	
KENYA			
<i>Central Province</i>			
Embu District . 19.I		1 ¹	
<i>Rift Valley Province</i>			
El Doret 19.I		2 ¹	
Kitale 15.I		1 ¹	
Nakuru District 12-13.I		4 ¹	
<i>Provinces</i>			
Rift Valley	28.XII-3.I	2 ¹	5 ¹
Southern		1 ¹	0
¹ <i>Varicella minor/Alastrim</i>			
NIGÉRIA — NIGERIA			
<i>Western Region</i>			
Abeokuta, Province . . .		1	
<i>Northern Region</i>			
Kano (Urban Area) . . .		12	
<i>Provinces</i>			
Kano		1	
Sokoto		5	
OUGANDA — UGANDA			
Jinja, Town		1	
Busoga, District		1	

RHODÉSIE ET DU NYASSALAND, FÉDÉRATION DE			
RHODESIA AND NYASALAND, FEDERATION OF			
NORTHERN RHODESIA			
Northern, Province . . .		3	
SOUTHERN RHODESIA			
Northern Region		1	
SIERRA LEONE			
<i>Provinces</i>			
South Eastern		1	
South Western		1	
SOUDAN — SUDAN			
<i>Blue Nile Province</i>			
Southern Gezira		3	
<i>Kordofan Province</i>			
Jebels, District		1	
TANGANYIKA			
<i>Provinces</i>			
Lake	4-10.I	2	0
Southern		2	0
Western		91	14
		107	17
Amérique — America			
COLOMBIE — COLOMBIA			
<i>Dpto. Antioquia</i>			
Mun. Altamira		5	
<i>Dpto. Bolívar</i>			
Mun. San Pedro		3	
<i>Dpto. Boyacá</i>			
Mun. Coper		1	
<i>Dpto. Caldas</i>			
Mun. La Virginia		1	
<i>Dpto. Huila</i>			
Mun. La Plata		1	
<i>Dpto. Tolima</i>			
Mun. Alpujarra		2	
» Guamo		1	
» San Antonio		3	
<i>Dpto. Valle del Cauca</i>			
Mun. Darién		1	
<i>Int. del Meta</i>			
Mun. Villavicencio . . .		1	

ÉQUATEUR — ECUADOR		C	4-10.I
Guayaquil (PA)			2
<i>Prov. Guayas</i>			
<i>Cantón Daule</i>			
Parr. Salitre			1
<i>Prov. Los Rios</i>			
<i>Cantón Quevedo</i>			
Parr. Quevedo			1
<i>Prov. Canar</i>			
<i>Cantón Azogues</i>			
Parr. Azogues			2
<i>Prov. Cotopaxi</i>			
<i>Cantón Latacunga</i>			
Parr. Latacunga			6
<i>Cantón Pujilí</i>			
Parr. Pujilí			1
<i>Cantón Salcedo</i>			
Parr. San Miguel			15
<i>Prov. Imbabura</i>			
<i>Cantón Ibarra</i>			
Parr. Ibarra			2
Asie — Asia			
AFGHANISTAN			
Kabul (A)			3
Mashriqui Prov.: Jalalabad			10
ARABIE SAOUDITE			
SAUDI ARABIA			
Jeddah (PA)			1
Taif			1
BIRMANIE — BURMA			
Akyab (PA)			16
Rangoon (PA)			2
			4
			4-10.I
<i>Magwe Division</i>			
Minbu, District		5	0
<i>Mandalay Division</i>			
Yamethin, District . . .		4	0
<i>Pegu Division</i>			
Insein, District		5	0

VARIOLE (suite)
SMALLPOX (continued)

Asie (suite) — Asia (continued)

	C	D	C	D
INDE — INDIA	11-17.I		18-24.I	
Ahmedabad (A)	2	0	1	1
Allahabad (A) ■ 28.I	0	0	2	0
Alleppey (P)	2	4
Bombay (PA)	2	1	10	1
Calcutta (PA) ¹	2	2	1	1
Cochin (P)	34	7	33	3
Kanpur (A)	1	1	0	0
Madras (PA)	54	10
Visakhapatnam (P)	4	1	1	1

¹ A l'exclusion de la circonscription de l'aéroport de Dum-Dum. — Excl.: Local area of Dum Dum airport.

	C	D	C	D	C	D
	21-27.XII		28.XII-3.I		4-10.I	

Andhra Pradesh State

Districts

Anantapur	6p	2p	1p	1p
Cuddappah	3p	0p
East Godavari	1p	0p	1p	0p
Guntur	9p	2p	16p	2p
Krishna	2p	1p
Kurnool	3p	3p
Nellore	6p	2p
Srikakulam	5p	3p
Visakhapatnam	0p	2p	3p	0p
West Godavari	3p	1p	5p	0p

Bihar State

Districts

Hazaribagh	38	14	38p	14p
Monghyr	13	0	7p	0p
Muzaffarpur	0	0	26p	13p
Palamau	1	0	1p	0p	16p	3p
Purnea	0	0	59p	13p
Ranchi	5	0	5p	0p	12p	0p
Santal Parganas	9	3

Bombay State

Districts

Ahmednagar	15p	3p	1p	1p	18p	0p
Amravati	6p	0p	6p	1p
Amreli	5p	0p
Chanda	2p	0p
East Khandesh	5p	0p	10p	0p	4p	1p
Kaira	4p	1p
Nasik	12p	0p	6p	1p	2p	1p
Poona	8p	0p	3p	0p	5p	1p
Satara North	6p	1p	5p	0p
Satara South	4p	0p
Sholapur	5p	0p
Sorath	6p	0p
West Khandesh	1p	1p	3p	0p
Yeotmal	19p	0p	1p	1p
Buldana ■ 22.I

Himachal Pradesh State

Mahasu, District ■ 28.I

Kerala State

Districts

Alleppey	3p	3p
Trichur	2p	1p	3p	1p

Madhya Pradesh State

Districts

Balaghat	6p	0p
Raigarh	33p	8p	56p	7p	24p	6p
Raisen	9p	0p	3p	0p
Sagar	3p	0p	4p	0p
Surguja	113p	11p	6p	0p

	C	D	C	D	C	D
INDE (suite)	21-27.XII		28.XII-3.I		4-10.I	
INDIA (ctd)						

Madras State

Districts

Chingleput	9p	1p
Coimbatore	2p	0p	4p	3p	5p	3p
North Arcot	1p	1p
Salem	1p	1p	4p	0p
South Arcot	1p	1p	1p	1p
Tanjore	1p	0p	4p	0p
Tiruchirappalli	2p	2p

Mysore State

Districts

Bangalore	5p	0p
Belgaum	3p	0p
Bijapur	3p	2p	1p	0p
Coorg	3p	0p	7p	0p
Dharwar	23p	3p	2p	0p
Mysore	1p	0p	5p	1p

Orissa State

Districts

Balasore	1p	0p
Bolangir	6p	0p
Cuttack	6p	0p
Dhenkanal	1p	0p
Ganjam	33p	13p	6p	0p
Kalahandi	50p	19p	4p	0p
Koraput	93p	23p	39p	4p
Mayurbhanj	1p	0p
Puri	13p	6p
Sambalpur	4p	0p

Punjab State

Districts

Rohtak	0p	4p	2p	0p
Bhatinda ■ 24.I

Rajasthan State

Districts

Alwar	5p	0p
Bikaner	3p	0p
Jhunjhunu	9p	0p	25p	2p
Jodhpur	8p	2p
Kotah	1p	0p
Nagaur	10p	8p
Sikar	52p	13p	1p	1p
Tonk	1p	0p

Uttar Pradesh State

Districts

Agra	4p	2p	8p	2p	2p	0p
Aligarh	25p	6p	3p	0p
Almora	1p	0p
Azamgarh	5p	0p
Ballia	1p	1p	3p	1p
Banaras	1p	0p
Banda	1p	2p	2p	0p
Bijnor	8p	2p
Faizabad	1p	0p	4p	2p	2p	0p
Farrukhabad	1p	0p
Fatehpur	1p	0p
Gonda	7p	2p
Gorakhpur	1p	0p
Hardoi	6p	1p
Jhansi	1p	0p	3p	0p
Kanpur	4p	0p
Kheri	1p	0p
Lucknow	2p	0p
Mainpuri	1p	0p
Muzaffarnagar	2p	2p	3p	1p	1p	1p
Nainital	1p	0p
Pilibhit	19p	5p
Saharanpur	11p	3p	11p	7p
Shahjahanpur	4p	2p	2p	1p
Sitapur	1p	0p
Bara Banki ■ 22.I
Rampur ■ 24.I
Unnao ■ 22.I

	C	D	C	D	C	D
INDE (suite)	21-27.XII		28.XII-3.I		4-10.I	
INDIA (ctd)						

West Bengal State

Districts

Bankura	1	0	32p	5p
Birbhum	6	1	2p	0p	2p	0p
Burdwan	10	0	8p	6p	20p	5p
Darjeeling	1	0	2p	1p
Hooghly	9	5	3p	2p
Malda	3	1
Midnapur	8	3	10p	3p
Murshidabad	10	6	2p	0p	2p	0p
Nadia	1	1
24-Parganas	26	12
Purulia	22p	9p	62p	25p
West Dinajpur	8	4

Bombay State

Districts

Ahmedabad	2	0
Akola	1	0

Kerala State

Districts

Cannanore	1	0
Kozhikode	3	1
Quilon	1	1
Trivandrum	1	0

Madras State

Districts

Kanya Kumari	9	1
Mathurai	1	0
Nilgiris	3	0
Ramanathapuram	4	0

Mysore State

Districts

Hassan	3	0
Kolar	2	1
Shimoga	4	0

Punjab State

Districts

Ferozepur	2	0
Gurdaspur	5	1
Sangrur	6	3

Uttar Pradesh State

Districts

Basti	3	0
Budaun	6	0
Deoria	5	0
Hamirpur	4	0
Jaunpur	3	2
Mirzapur	7	3

30.XI-6.XII

VARIOLE (suite)
SMALLPOX (continued)

Asie (suite) — Asia (continued)

	C	D
INDONÉSIE — INDONESIA	28.XII-10.I	
Makasar (PA)	4	4
<i>Djawa Tengah Province</i> <i>Surakarta Residency</i>	18-24.I	
Klaten Regency	1 ^s	0
<i>Sulawesi Province</i>	9.XI-6.XII	
Buton Island	186	24

	C	D	C	D
PAKISTAN	11-17.I		18-24.I	
Chalna (P)	1 ¹	0	0	0
Dacca (A)	1	1	0	0
Karachi (PA)	11 ²	2	1	1
Lahore (A)	4	0	0	0

¹ Provenant de l'intérieur/Originated inland.

² Dont 2 cas provenant de l'intérieur. — Including 2 cases originated inland.

	14-20.XII	21-27.XII
East Pakistan	146	60
West Pakistan	65	24

	28.XII-3.I	4-10.I
East Pakistan	152	71
West Pakistan	3 ^p	0 ^p

	18-24.I
IET-NAM	
<i>Khan Hoa Province</i>	
Ninh-Hoa, District	2

Europe

	C
ALLEMAGNE, RÉP. FÉDÉRALE	20-26.I
GERMANY, FED. REPUBLIC	
<i>Württemberg-Baden, Land</i>	
Heidelberg	4 ¹

¹ Dont un suspect et 3 cas: début de la maladie: 7.I (diagnostiqué le 22.I), 19.I et 21.I. — Including one suspected case and 3 cases: onset of disease: 7.I (diagnosed on 22.I), 19.I and 21.I.

	28.I ²
<i>Nordrhein-Westfalen, Land</i>	
Köln (A)	1 ^s

² Date du télégramme / Date of telegram.

TYPHUS A POUX
LOUSE-BORNE TYPHUS FEVER

Afrique — Africa

	C
LIBYE — LIBYA	18-24.I
Tripoli, District	1

	11-17.I
RÉPUBLIQUE ARABE UNIE	
UNITED ARAB REPUBLIC	
EGYPT	
Cairo (A)	1

	Provinces
Beheira	3
Gharbiya	19
Qaliubiya	1
Western Desert	2

	C
TUNISIE — TUNISIA	14.I

<i>Gouvernorat de Sbeitla</i>	
Sbiba, Circ. méd.	2

Amérique — America

	28.XII-3.I
--	------------

<i>Prov. Bolívar</i> <i>Cantón Guaranda</i>	
Parr. Santa Fé	2

<i>Prov. Cotopaxi</i> <i>Cantón Latacunga</i>	
Parr. Latacunga	1

<i>Cantón Pujilí</i>	
Parr. Isinche	1

<i>Prov. Imbabura</i> <i>Cantón Ibarra</i>	
Parr. Ibarra	2

	30.XII
--	--------

<i>Dpto. Ancash</i> <i>Prov. Pomabamba</i>	
Dto. Pomabamba	1

Asie — Asia

	18-24.I
--	---------

TURQUIE — TURKEY	
Bilecik, Province	1

Europe

	28.XII-17.I
--	-------------

TURQUIE — TURKEY	
Istanbul, Province	0 ^r

Prix du Relevé épidémiologique hebdomadaire

Price of the Weekly Epidemiological Record

Par numéro Fr. s. 1.— \$0.30 1/9 Per single copy

Abonnement annuel Fr. s. 45.— \$14.00 £3.15.0 Annual subscription

MALADIES QUARANTENAIRES — QUARANTINABLE DISEASES

Zones infectées à la date du 29 janvier 1959 — Infected areas as of 29 January 1959

Notifications reçues aux termes du Règlement sanitaire international concernant les circonscriptions infectées ou les territoires où la présence de maladies quaranténaires a été signalée.

Notifications received under the International Sanitary Regulations relating to infected local areas and to areas in which the presence of quarantinable diseases was reported.

■ = Circonscriptions ou territoires notifiés aux termes de l'article 3 à la date donnée.

■ = Areas notified under Article 3 on the date indicated.

Autres territoires où la présence de maladies quaranténaires a été notifiée aux termes des articles 4, 5 et 9 a¹:

Other areas in which the presence of quarantinable diseases was notified under Articles 4, 5 and 9 (a) ¹:

A = pendant la période indiquée sous le nom de chaque maladie;
B = antérieurement à la période indiquée sous le nom de chaque maladie.

A = during the period indicated under the heading of each disease;
B = prior to the period indicated under the heading of each disease.

¹ La date indiquée est celle de la fin de la semaine pendant laquelle est survenu le dernier cas notifié.

¹ The date shown is that of the end of the week in which the last notified case occurred.

PESTE — PLAGUE	
11-29.I	
Afrique — Africa	
KENYA	
Central, Province	B 3.I
Amérique — America	
PÉROU — PERU	
Piura, Dpto.	
Païta, Prov.	
El Archal, Dto.	B 1.I
Asie — Asia	
BIRMANIE — BURMA	A 24.I
Mandalay, Division	
Meiktila, District	B 3.I

PESTE DES RONGEURS	
RODENT PLAGUE	
28.XII-29.I	
Océanie — Oceania	
HAWAÏ — HAWAII	
Hamakua, District	■ 14.V.57

CHOLÉRA — CHOLERA	
11-29.I	
Asie — Asia	
INDE — INDIA	
Calcutta (PA) ¹	■ 17.III.56
Lucknow (A)	■ 5.VII.58
Madras (PA)	■ 31.X.58

¹ A l'exclusion de la circonscription de l'aéroport de Dum-Dum — Excluding local area of Dum Dum airport.

<i>Andhra Pradesh, State</i>	
Anantapur, District	■ 17.II.58
Cuddappah, District	■ 4.IX.58
East Godavari, District	■ 17.IX.57
Guntur, District	■ 26.VII.58
Khammam, District	■ 5.XII.58
Krishna, District	■ 17.IX.56
Kurnool, District	■ 11.XII.57
Mahbubnagar, District	■ 8.II.58
Nellore, District	■ 27.IX.58
Srikakulam, District	■ 5.VI.58
Visakhapatnam, District	■ 5.VII.58
West Godavari, District	■ 6.XI.56

<i>Assam, State</i>	
Darrang, District	B 6.XII
Goalpara, District	■ 20.XI.58
Kamrup, District	■ 14.XI.58

<i>Bihar, State</i>	
Bhagalpur, District	■ 26.VII.58
Champaran, District	■ 5.IX.58
Darbhanga, District	■ 5.VII.58
Gaya, District	■ 5.VII.58
Hazaribagh, District	■ 9.VII.58
Monghyr, District	■ 6.VIII.58
Muzaffarpur, District	■ 22.V.58
Palamau, District	■ 6.X.58
Patna, District	■ 27.VI.56
Santal Parganas, District	■ 5.IX.58
Saran, District	■ 26.VII.58
Shahabad, District	■ 7.IV.58

<i>Bombay, State</i>	
Ahmednagar, District	■ 26.VII.58
Amravati, District	■ 26.VII.58
Bhandara, District	■ 5.XII.58
Chanda, District	■ 25.VI.58
East Khandesh, District	■ 31.X.58
Kaira, District	■ 19.IX.58
Kolaba, District	■ 12.X.58
Nasik, District	■ 6.XI.58
Parbhani, District	■ 13.IX.58
Sholapur, District	■ 10.I
Surat, District	■ 8.XII.58
Yeotmal, District	■ 22.V.58

<i>Madhya Pradesh, State</i>	
Balaghat, District	■ 1.VI.57
Bilaspur, District	■ 15.VII.58
Cbindwara, District	■ 29.V.57
Gwalior, District	B 27.IX
Nimar, District	■ 25.V.57
Raipur, District	■ 4.VI.56

<i>Madras, State</i>	
Chingleput, District	■ 19.XII.58

<i>Mysore, State</i>	
Bellary, District	■ 28.I.57
Bijapur, District	■ 21.VI.57
Chitaldrug, District	■ 7.IV.58
Dharwar, District	B 10.I

<i>Orissa, State</i>	
Balasure, District	■ 21.IV.56
Bolangir Patna, District	■ 15.IV.58
Cuttack, District	■ 8.II.58
Ganjam, District	■ 7.VIII.56
Kalahandi, District	■ 15.IV.58
Puri, District	■ 7.VIII.56
Sundergarh, District	■ 7.III.58

<i>Pondicherry State</i>	■ 16.XII.58
------------------------------------	-------------

<i>Punjab, State</i>	
Rohtak, District	■ 20.VIII.58

<i>Trlpura, State</i>	■ 30.XI.56
---------------------------------	------------

<i>West Bengal, State</i>	
Burdwan, District	■ 6.II.58
Hooghly, District	B 3.I
Murshidabad, District	■ 17.XI.58
Nadia, District	■ 7.IV.58
24-Parganas, District	B 6.XII

PAKISTAN	
<i>East Pakistan</i> B 3.I	
Chalna (P)	■ 18.V.57
Chittagong (PA)	■ 18.V.57
Dacca (A)	A 24.I
Bakarganj, District	■ 18.V.57
Chittagong, District	■ 18.V.57
Dacca, District	■ 18.V.57
Faridpur, District	■ 18.V.57
Jessore, District	■ 18.V.57
Khulna, District	■ 18.V.57
Mymensingh, District	■ 18.V.57
Noakhali, District	■ 18.V.57
Pabna, District	■ 18.V.57
Rangpur, District	■ 18.V.57
Sylhet, District	■ 18.V.57
Tippera, District	■ 18.V.57

THAÏLANDE — THAILAND	
Bangkok (PA)	■ 22.V.58
Thonburi, Province	■ 22.V.58
Angthong, Province	A 24.I
Ayuthya, Province	A 24.I
Chainat, Province	A 24.I
Chachoengsao	A 24.I
Nakhon Sawan	A 24.I
Pathumthani	A 24.I
Phetchburi	A 24.I
Phitsnulok	A 24.I
Prachuapkhirkhan, Prov.	A 17.I
Ratchburi Province	A 24.I
Samut Prakan, Province	A 24.I
Samut Sakhon, Province	A 24.I
Samut Songkhram, Prov.	A 24.I
Singburi, Province	A 17.I
Sukorhai, Province	A 24.I
Uttaradit, Province	A 19.I

FIÈVRE JAUNE	
YELLOW FEVER	
2.XI-29.I	
Afrique — Africa	

ANGOLA	
Territoire situé au nord du 10° S. — Territory North of 10° S	■ 7.X.58
CONGO BELGE	
BELGIAN CONGO	
Territoire situé au nord du 10° S. — Territory North of 10° S	■ 11.XII.56

GAMBIE — GAMBIA	■ 1.X.56 ¹
----------------------------------	-----------------------

GHANA	■ 1.X.56 ¹
------------------------	-----------------------

NIGÉRIA, Fédération de la	NIGERIA, Federation of
■ 1.X.56 ¹	■ 1.X.56 ¹

SIERRA LEONE	
■ 1.X.56 ¹	
SOUDAN — SUDAN	
Territoire situé au sud du 12° N. — Territory South of 12° N.	
■ 17.XII.56	

¹ Territoire non lié par le Règlement additionnel du 26 mai 1955 et qui était compris dans la zone d'endémicité amarile. — Territory not bound by Additional Regulations of 26 May 1955 and previously within the yellow-fever endemic zone.

Amérique — America

BRÉSIL — BRAZIL

Goiás, Edo.
Ipameri, Mun. A 23.XII
Luziania, Mun. A 21.XII

COLOMBIE — COLOMBIA

Santander, Dpto.
San Vicente, Mun. A 23.XII
Velez, Mun. A 9.XII
Caqueta, Intendencia. A 29.XII
Casanare, Intendencia A 9.XII
Meta, Intendencia . . B 10.X

VARIOLE — SMALLPOX

28.XII-29.I

Afrique — Africa

AFRIQUE-OCCIDENTALE

FRANÇAISE

FRENCH WEST AFRICA

Dakar (PA) B 15.XII

Côte d'Ivoire

Abengourou, Cercle A 5.I
Abidjan, Cercle A 5.I
Agboville, Cercle B 15.XII
Daloa, Cercle A 5.I
Dimbokro, Cercle B 15.XII
Gagnoa, Cercle A 5.I
Grand-Bassam, Cercle B 15.XII
Grand-Lahou, Cercle A 5.I
Man, Cercle A 5.I
Sassandra, Cercle A 5.I
Séguéla, Cercle A 5.I

Dahomey

Abomey, Cercle A 12.I
Abomey: Cové, Subd. A 12.I
Grand-Popo, Cercle A 5.I
Kandi, Cercle A 5.I
Ouidah, Cercle A 29.XII
Parakou, Cercle B 22.XII
Portonovo, Cercle A 29.XII
Savalou, Cercle A 12.I

Haute-Volta

Dédougou, Cercle A 5.I
Diébougou, Cercle A 5.I
Dori, Cercle A 29.XII
Kongoussi, Cercle A 12.I
Ouahigouya, Cercle A 5.I

Niger

Magaria, Cercle A 29.XII
Zinder, Cercle A 29.XII

Soudan

Koutiala, Cercle A 5.I
San, Cercle A 5.I

ALGÉRIE — ALGERIA

Région d'Oran

Ain Temouthent A 31.XII
Les Abdellys B 20.XII

CONGO BELGE

BELGIAN CONGO

Equateur, Province A 10.I
Kasai, Province A 10.I
Katanga, Province A 10.I
Léopoldville, Province A 10.I
Orientale, Province A 3.I
Ruanda Urundi A 3.I

ÉTHIOPIE — ETHIOPIA ■ 21.V.57

GAMBIE — GAMBIA

Central, Division B 27.XII

GHANA

Accra (P), Municipal Area¹ ■ 22.VIII.58
Cape Coast (P) ■ 25.IX.58
Keta (P) ■ 5.IX.58
Sekondi Takoradi (P) ■ 17.X.58

Ashanti, Region

Wenchi Sunyani, District ■ 31.X.58

Eastern, Region

New Juabeng, District ■ 20.I

Trans-Volta[Togoland, Region

Ho, District

Ada, District ■ 11.IX.58
Kpandu ■ 5.IX.58

Western, Region

Cape Coast, District ■ 2.I
Sefwi, District ■ 22.VII.57
Wassaw Aowin, District ■ 10.X.58

GUINÉE — GUINEA

Dalaba, Cercle B 25.VIII
Faranah, Cercle B 1.IX

KENYA

Nairobi (A)² B 20.XII

Central, Province . .

Embu, District A 19.I

Nyanza, Province

Central Nyanza, District. A 9.I

Rift Valley, Province

El Doret A 19.I
Kitale A 15.I
Molo B 24.XII
Naivasha A 6.I
Nakuru, District A 13.I

Southern, Province . . A 3.I

LIBÉRIA — LIBERIA ■ 15.III.58

NIGÉRIA, Fédération de la
NIGERIA, Federation of ■ 6.II.57

UGANDA — UGANDA

Jinja Town ■ 20.XII.58
Mbale Town ■ 5.VII.58

Buganda, Province

Mengo, District A 3.I

Eastern, Province

Bugisu, District ■ 7.IX.57
Bukedi, District ■ 6.VII.57
Busoga, District ■ 3.I

Northern, Province

Karamoja, District ■ 15.VI.57

Western, Province

Toro, District. ■ 24.V.58

¹ A l'exclusion de l'aéroport d'Accra. Excl. : Accra airport.

² A l'exclusion de la circonscription de l'aéroport de Nairobi (Embakasi) — Excluding local area of Nairobi (Embakasi) airport.

RHODÉSIE ET NYASSALAND,

Fédération de

RHODESIA AND NYASSALAND,

Federation of

Northern Rhodesia

Northern, Province A 24.I

Nyasaland

Central, Province A 10.I

Southern Rhodesia

Northern, Region A 24.I

SIERRA LEONE

Bonthe (P) B 27.XII

Northern, Province ■ 9.II.57

South-Eastern, Province ■ 9.II.57

South-Western, Province ■ 9.II.57

SOUDAN — SUDAN

Port-Sudan, Zone ■ 2.VII.57

Blue Nile, Province ■ 13.VIII.57

Northern, Province ■ 23.VII.57

Kordofan, Province

El Obeid Town ■ 2.I

Central, District A 3.I

Jebels, District A 24.I

Western, District A 17.I

TANGANYIKA

Dar-es-Salaam (PA) A 3.I

Eastern, Province B 27.XII

Lake, Province A 10.I

Southern, Province A 10.I

Southern Highlands B 27.XII

Western, Province A 17.I

TOGO

Ancho, Cercle A 10.I

Amérique — America

ARGENTINE — ARGENTINA

Chaco, Prov.

Resistencia A 31.XII

San Luis, Prov.

San Luis B 10.XII

BOLIVIE — BOLIVIA

Oruro, Dpto.

Dalence, Prov.

Huanuni B 22.XI

BRÉSIL — BRAZIL

Belem (PA) B 30.VI

Maceio (P) B 30.VI

Porto Alegre (PA) B 30.VI

Recife (PA) B 30.VI

Rio de Janeiro (PA) B 31.X

Salvador (P) B 30.VI

Sao Luis (P) B 30.VI

Sao Paulo (A) B 30.VI

Vitoria (P) B 30.VI

Parana, Edo.

Curitiba B 30.VI

COLOMBIE — COLOMBIA

Bogota (A) B 7.XII

Cali (A) B 7.XII

Medellin (A) B 7.XII

Antioquia, Dpto.

Altamira, Mun. B 14.XII

Betunia, Mun. B 23.XI

Narino, Mun. B 7.XII

Sto. Domingo, Prov. B 30.XI

Bolivar, Dpto.

San Pedro, Mun. B 14.XII

Villanueva, Mun. B 30.XI

Zambrano, Mun. B 23.XI

Boyaca, Dpto.

Coper, Mun. B 14.XII

Caldas, Dpto.

La Celia, Mun. B 7.XII

La Virginia, Mun. B 14.XII

Quimbaya, Mun. B 7.XII

Choco, Dpto.

Istmina, Mun. B 23.XI

Quibdo, Mun. B 30.XI

Cordoba, Dpto.

Chima, Mun. B 23.XI

San Marcos, Mun. B 7.XII

Huila, Dpto.

Campoalegre, Mun. B 7.XII

La Plata, Mun. B 14.XII

Tolima, Dpto.

Alpujarra, Mun. B 14.XII

Alvarado, Mun. B 30.XI

Armero, Mun. B 23.XI

Guamo, Mun. B 14.XII

Ibagué, Mun. B 30.XI

Libano, Mun. B 30.XI

San Antonio, Mun. B 14.XII

Villahermosa, Mun. B 23.XI

Valle, Dpto.

Bugalagrande, Mun. B 7.XII

Cartago, Mun. B 7.XII

Darien, Mun. B 14.XII

Palmira, Mun. B 7.XII

Sevilla, Mun. B 7.XII

Toro, Mun. B 30.XI

Zarzal, Mun. B 23.XI

Int. del Meta B 14.XII

ÉQUATEUR — ECUADOR

Guayaquil (PA) A 10.I

Azuay, Prov.

Cuenca, Canton

Cuenca, Parr. B 27.XII

Canar, Prov.

Azogues, Canton

Azogues, Parr. A 3.I

Carchi, Prov.

Tulcan, Canton

Tulcan, Parr. B 20.XII

Cotopaxi, Prov.

Latacunga, Canton

Latacunga, Parr. A 3.I

Pujili, Canton

Pujili, Parr. A 3.I

Salcedo, Canton

San Miguel, Parr. A 3.I

Guayas, Prov.

Balzar, Canton

Colimes, Parr. B 27.XII

Daule, Canton

Salitre, Parr. A 10.I

Guayaquil, Canton

Naranjal, Parr. B 20.XII

Yaguachi, Canton

Boca de los Sapos, Parr. B 27.XII

Imbabura, Prov.

Ibarra, Canton

Ibarra, Parr. A 3.I

Loja, Prov.

Celica, Canton

Cruzpamba, Parr. B 20.XII

Zapotillo, Parr. B 20.XII

Gonzanamá, Canton

Quilanao, Parr. B 20.XII

Los Rios, Prov.

Quevedo, Canton

Quevedo, Parr. A 10.I

Napo Pastaza, Prov.
Napo, Canton

Tena, Parr. B 20.XII

Tungurahua, Prov.
Ambato, Canton

Ambato, Parr. B 27.XII

Huachi Chico B 20.XII

Asie — Asia

ADEN COLONY

Aden (PA) A 19.I

AFGHANISTAN

Herat (A) A 3.I

Kabul (A) A 17.I

Kandahar (A) A 3.I

Farah, Province A 3.I

Herat, Province A 3.I

Kataghan, Province B 27.XII

Mashriqui, Prov.: Jalalabad A 17.I

ARABIE SAOUDITE

SAUDI ARABIA

Dammam (P) B 27.XII

Jeddah (PA) A 17.I

Mecca A 10.I

Taif A 17.I

BIRMANIE — BURMA

Akyab (PA) ■ 16.XI.58

Moulmein (P) A 3.I

Rangoon (PA) ■ 19.I.57

Arakan, Division

Kyaukpyu, District B 11.X

Irrawaddy, Division

Moulmeingyun Town B 6.XII

Magwe, Division

Minbu, District A 10.I

Mandalay, Division

Yamethin, District A 10.I

Pegu, Division

Insein, District A 10.I

Sagaing, Division

Upper Chindwin, District B 4.X

Shan, State

Taunggyi Town B 25.X

INDE — INDIA

Ahmedabad (A) ■ 30.XII.58

Allahabad (A) ■ 28.I

Alleppey (P) ■ 12.VII.58

Bombay (PA) A 24.I

Caleutta (PA)¹ ■ 24.II.58

Cochin (P) ■ 4.III.58

Delhi (A) ■ 5.I.56

Kanpur (A) ■ 30.XII.58

Lucknow (A) ■ 10.XII.58

Madras (PA) ■ 5.V.57

Visakhapatnam (P) ■ 23.III.56

Andhra Pradesh, State

Anantapur, District ■ 13.XII.57

Chittoor, District ■ 6.III.56

Cuddappah, District ■ 30.I.57

East Godavari, District ■ 11.XII.57

Guntur, District A 3.I

Krishna, District B 27.XII

Kurnool, District ■ 2.VII.55

Nellore, District ■ 30.XI.55

Srikakulam, District ■ 5.X.55

Visakhapatnam, District ■ 1.III.56

Warrangal, District ■ 13.XII.58

West Godavari, District A 3.I

Assam, State

Kamrup, District ■ 24.II.56

United Khasi & Jaintia Hills, District ■ 25.I.58

¹ A l'exclusion de la circonscription de l'aéroport de Dum-Dum. — Excl.: Local area of Dum Dum airport.

Bihar, State

Bhagalpur, District ■ 7.IV.58

Darbhanga, District ■ 10.XII.57

Dhanbad, District ■ 28.III.58

Gaya, District ■ 24.I.56

Hazaribagh, District ■ 10.XII.57

Monghyr, District ■ 28.III.58

Muzaffarpur, District A 10.I

Palamau, District ■ 15.II.58

Patna, District ■ 7.XII.56

Purnea, District ■ 1.II.58

Ranchi, District ■ 13.XII.57

Santal Parganas, District B 27.XII

Shahabad, District ■ 7.IV.58

Singbhum, District ■ 15.II.58

Bombay, State

Ahmedabad, District ■ 1.X.55

Ahmednagar, District ■ 13.XII.57

Akola, District ■ 23.XII.55

Amravati, District ■ 10.I

Amreli, District ■ 5.I

Buldana, District ■ 22.I

Baroda, District B 13.XII

Chanda, District A 10.I

East Khandesh, District ■ 10.XII.57

Kaira, District ■ 5.I

Kolhapur, District ■ 22.II.58

Nasik, District ■ 13.XII.57

Poona, District ■ 2.II.57

Sabarkantha, District B 6.XII

Satara North, District ■ 21.1.57

Satara South, District ■ 5.I

Sholapur, District A 10.I

Sorath, District ■ 14.XII.56

Surat, District ■ 6.I

West Khandesh, District A 10.I

Yeotmal, District ■ 13.XII.58

Himachal Pradesh, State

Mahasu, District ■ 28.I

Mandi, District ■ 22.V.58

Jammu and Kashmir, State

State ■ 1.VIII.53

Kerala, State

Alleppey, District B 27.XII

Cannanore, District B 20.XII

Kottayam, District B 6.XII

Kozhikode, District B 20.XII

Malabar, District ■ 18.I.56

Palghat, District B 6.XII

Quilon, District B 20.XII

Trichur (Cochin), District ■ 3.I.57

Trivandrum, District B 20.XII

Madhya Pradesh, State

Balaghat, District ■ 24.I.56

Bastar, District ■ 15.VII.58

Bhind, District ■ 28.III.58

Bilaspur, District ■ 13.XII.57

Chhindwara, District ■ 10.I.58

Drug, District ■ 24.I.56

Guna, District ■ 1.II.58

Indore, District ■ 28.III.58

Jabalpur, District ■ 25.I.58

Mandla, District ■ 30.XII.57

Mandsaur, District ■ 20.VI.57

Narsinghpur, District ■ 28.III.58

Panna, District ■ 7.IV.58

Raigarh, District ■ 13.XII.57

Raipur, District ■ 11.XII.56

Raisen, District ■ 8.XI.55

Rewa, District ■ 15.IV.58

Sagar, District ■ 25.I.58

Sehore, District ■ 8.XI.55

Seoni, District ■ 15.VII.58

Shivpuri, District ■ 1.VI.57

Surguja ■ 10.I

Madras, State

Chingleput, District A 3.I

Coimbatore, District A 10.I

Kanya Kumari, District ■ 13.XII.58

Mathurai, District B 20.XII

Nilgiris, District B 20.XII

North Arcot, District ■ 3.II.56

Ramanathapuram, District B 20.XII

Salem, District A 3.I

South Arcot, District A 10.I

Tanjore, District A 10.I

Tiruchirappalli, District ■ 28.III.56

Tirunelveli, District B 27.XII

Mysore, State

Bangalore, District ■ 1.III.57

Belgaum, District ■ 7.IV.58

Bellary, District ■ 2.IV.57

Bijapur, District ■ 7.XII.56

Chikmagalur, District ■ 1.II.58

Chitaldrug, District ■ 17.IV.57

Coorg, District ■ 13.XII.57

Dharwar, District ■ 5.I

Hassan, District ■ 6.IV.57

Kolar, District ■ 19.XII.56

Mandya, District ■ 1.II.57

Mysore, District ■ 15.V.57

North Kanara, District ■ 14.IX.56

Raichur, District B 29.XI

Shimoga, District ■ 2.II.57

South Kanara, District B 6.XII

Tumkur, District ■ 24.VII.57

Orissa, State

Balasure, District A 3.I

Baudh, District B 20.XII

Bolangir, District A 3.I

Cuttack, District A 10.I

Dhenkanal, District A 10.I

Ganjam, District A 10.I

Kalahandi, District A 10.I

Koraput, District ■ 17.XII.56

Mayurbhanj, District A 10.I

Puri, District A 3.I

Sambalpur, District A 10.I

Sundergarh, District ■ 30.XII.57

Pondicherry, State.

State B 13.XII

Punjab, State

Amritsar, District ■ 10.VII.58

Bhatinda, District ■ 24.I

Ferozepur, District B 20.XII

Gurdaspur, District ■ 1.III.58

Hissar, District ■ 25.I.58

Jullundur, District ■ 7.I

Ludhiana, District ■ 10.VII.58

Patiala, District ■ 18.I.58

Rohtak, District ■ 22.XI.57

Sangrur, District ■ 10.XII.58

Rajasthan, State

Alwar, District ■ 22.II.58

Banswara, District ■ 23.III.57

Bharatpur, District ■ 10.I.58

Bhilwara, District ■ 14.XII.57

Bikaner, District ■ 7.I

Bundi, District ■ 7.IV.58

Chittorgarh, District B 6.XII

Churu, District B 6.XII

Dungarpur, District ■ 14.XII.57

Ganganagar, District ■ 15.XII.56

Jaipur, District ■ 14.XII.57

Jalore, District ■ 28.III.58

Jhunjhunu, District ■ 21.XII.57

Jodhpur, District ■ 16.XII.58

Kotah, District ■ 30.XII.57

Nagaur, District ■ 15.XII.56

Pali, District ■ 11.XII.56

Sawai Madhopur, District ■ 25.I.58

Sikar, District ■ 9.II.57

Sirohi, District ■ 2.III.57

Tonk, District ■ 14.XII.57

Udaipur District ■ 14.XII.57

Tripura, State.

State ■ 2.III.57

Uttar Pradesh, State

Agra, District ■ 14.XII.57

Aligarh, District ■ 25.I.58

Allahabad, District ■ 30.XII.57

Almora, District A 3.I

Azamgarh, District ■ 19.XII.57

Bahraich, District ■ 10.I

Balia, District ■ 23.XII.57

Europe	
ALLEMAGNE, RÉP. FÉDÉRALE GERMANY, FED. REPUBLIC	
<i>Nordrhein-Westfalen, Land</i>	
Köln (A)	A 28.I
<i>Württemberg-Baden, Land</i>	
Heidelberg	A 22.I

TYPHUS A POUX †
LOUSE-BORNE TYPHUS FEVER †
28.XII-29.I

Afrique — Africa	
ALGÉRIE — ALGERIA	
<i>Région d'Oran</i>	
Nesmolli	B 20.XII
ÉTHIOPIE — ETHIOPIA	
Aroussi, Province	B 20.XII
Beghemeder, Province	B 20.XII
Eritrea, Province	B 20.XII
Gamou-Goffa, Prov.	B 13.XII
Gojjam Province	B 20.XII
Harar-Bale, Province	B 20.XII
Kaffa, Province	B 6.XII
Shoa, Province	B 20.XII
Sidamo-Borena, Province	B 29.XI
Tigre, Province	B 13.XII

† Deux cas ou plus au cours d'une période de quatre semaines. — Two or more cases during a four-week period.

GUINÉE PORTUGAISE PORTUGUESE GUINEA	
Teixeira Pinto, Delegacia	B 30.XI

LIBYE — LIBYA	
Tripoli, District	A 24.I

RÉPUBLIQUE ARABE UNIE UNITED ARAB REPUBLIC	
<i>Egypt</i>	
Cairo (A)	A 17.I
Beheira, Province	A 17.I
Dakalyia, Province	A 3.I
Gharbiya, Province	A 17.I
Western Desert	A 17.I

TUNISIE — TUNISIA	
<i>Kairouan, Gouvernorat</i>	
Kairouan, Circ. Med.	A 2.I
<i>Sbeitla, Gouvernorat</i>	
Sbiba, Circ. Méd.	A 14.I

UNION SUD-AFRICAINE UNION OF SOUTH AFRICA	
<i>Cape, Province</i>	
St.Marks, District	B 13.XII

Amérique — America	
ÉQUATEUR — ECUADOR	
<i>Azuay, Prov.</i>	
<i>Cuenca Cantón</i>	
Banos, Parr.	B 13.XII
Cuenca, Parr.	B 13.XII

<i>Bolívar, Prov.</i>	
<i>Guaranda, Canton</i>	
Santa Fé, Parr.	A 3.I

<i>Imbabura, Prov.</i>	
<i>Ibarra, Canton</i>	
Ibarra, Parr.	A 3.I

MEXIQUE — MEXICO	
<i>Durango, Edo.</i>	
Durango, Mun.	B 15.XI
<i>Oaxaca, Edo.</i>	
Oaxaca, Mun.	B 15.XI

PÉROU — PERU	
<i>Ancash, Dpto.</i>	
<i>Mariscal Luzurriaga, Prov.</i>	
Yauya, Dto.	B 10.XII

Asie — Asia

AFGHANISTAN	
<i>Maimana, Province</i>	
Maimana	A 10.I

CORÉE — KOREA	
Seoul City	B 1.XI
Cholla-Pukdo, Prov.	B 1.XI

Europe	
YOUgoslavie — YUGOSLAVIA	
<i>Croatie</i>	
Zagreb, District	B 21.XII
<i>Montenegro</i>	
Ivangrad, District	B 30.XI
<i>Serbie</i>	
Pec, District	B 21.XII
Pristina, District	B 30.XI

FIÈVRE RÉCURRENTÉ A POUX †
LOUSE-BORNE RELAPSING FEVER †
4-29.I

Afrique — Africa	
ÉTHIOPIE — ETHIOPIA	
Aroussi, Province	B 20.XII
Beghemeder, Province	B 6.XII
Eritrea, Province	B 20.XII
Harar-Bale, Province	B 20.XII
Kaffa, Province	B 20.XII
Shoa, Province	B 20.XII
Tigre, Province	B 20.XII
Wollega, Province.	B 20.XII

NIGÉRIA — NIGERIA	
<i>Western Region</i>	
Ondo, Province	B 13.XII

† Deux cas ou plus au cours d'une période de trois semaines. — Two or more cases during a three-week period.

CHOLÉRA EN 1958

La fréquence du choléra a été plus élevée en 1958 qu'au cours des quatre années précédentes (1954-1957) et, en dehors de l'Inde et du Pakistan, des épidémies se sont produites en Thaïlande et au Népal.

Environ 93 000 cas ont été officiellement déclarés en Asie pendant l'année, contre 64 000 en 1957 et pas moins de 242 000 en 1953.

Dans l'Inde et au Pakistan oriental le nombre de cas a passé en 1958 de 64 000 en 1957 à 81 000 environ en 1958, et une augmentation de la fréquence a été observée, sauf dans l'Uttar Pradesh et au Bihar, dans la plupart des Etats de l'Inde. La répartition de la maladie diffère cependant de celle de 1957 et ressort du tableau ci-après:

CHOLERA IN 1958

Cholera incidence in 1958 was higher than during the preceding four years (1954-1957) and, outside India and Pakistan, epidemics were also present during the year in Thailand and in Nepal.

About 93 000 cases were officially notified in Asia during the year as compared with 64 000 in 1957 and not less than 242 000 cases in 1953.

In India and East Pakistan the number of cases rose in 1958 from 64 000 to about 81 000 and, except in Uttar Pradesh and Bihar, an increase has been recorded in most States of India. However, the distribution pattern of the disease differed from that of 1957 as can be seen in the following table:

Etats — States	1958			1957 *		
	C.	p. 100		C	p. 100	
East Pakistan	16 297	20.0		8 110	12.6	
West Bengal	7 375	9.0		8 527	13.3	
Bihar	8 168	10.0		13 605	21.2	
Uttar Pradesh	618	0.8		1 906	3.0	
Orissa	5 159	6.4		1 924	3.0	
Madhya Pradesh	6 894	8.5		4 093	6.4	
Bombay State	10 304	12.7		7 812	12.1	
Mysore	6 307	7.8		2 948	4.6	
Andhra Pradesh	13 132	16.2		6 042	9.4	
Madras State	6 842	8.4		8 645	13.4	
Assam & Tripura	142	0.2		662	1.0	
Total	81 238	100.0		64 274	100.0	

C = Cas — Cases

* = Chiffres révisés — Revised figures.

Dans la basse vallée du Gange le Pakistan oriental a signalé 20 pour cent de tous les cas déclarés en 1958, 11 pour cent seulement ont été signalés plus haut dans la vallée du Gange (Bihar et Uttar Pradesh) tandis que la moitié de tous les cas se sont produits dans la partie centrale et méridionale de l'Inde, dans les Etats d'Orissa, Madhya Pradesh, Bombay, Mysore et Andhra Pradesh; en 1957 ces trois régions avaient fourni respectivement 13, 21 et 33 pour cent des cas déclarés.

Parmi les régions de l'Inde (voir carte) qui ont signalé le plus haut taux de morbidité (plus de 125 par 100 000 habitants) figurent le district de Kalahandi (2 386 cas des 5 159 déclarés dans l'Orissa), le district de Drug (2 150 cas sur 6 894 du Madhya Pradesh), les districts de East Khandesh et Nagpur dans l'Etat de Bombay, le district de Raichur (1 627 cas sur 6 307) au Mysore et le district de Mahbubnagar (1 590 cas) dans l'Andhra Pradesh.

Pas moins de 4 895 cas (avec 1 756 décès) ont été dénombrés pendant l'année à Calcutta où la maladie a été présente pendant toutes les semaines de l'année. Autres ports et villes attenantes à un aéroport international signalant un nombre considérable de cas: Delhi (241 cas); Madras (208) dans l'Inde et Chalna (133) au Pakistan oriental.

Le carton de la carte montre les districts dans lesquels le choléra a été présent pendant un nombre spécifié de semaines consécutives. Comme d'habitude, la maladie a sévi en 1958 pendant 39 semaines consécutives ou plus dans la basse vallée du Gange (Bengal occidental et Pakistan oriental) et aussi dans les districts côtiers de Ganjam en Orissa pendant 34 semaines et Srikakulam dans l'Andhra Pradesh (28 semaines).

En mai 1958 une épidémie de choléra a éclaté en *Thaïlande* d'où la maladie avait été absente depuis 1949. L'épidémie a atteint son point culminant en juin. Des 9 396 cas enregistrés dans le pays 6 175 étaient déclarés à Bangkok et dans la province avoisinante de Thonburi. Un nombre considérable de cas a été également signalé à l'ouest de cette province et dans les districts côtiers au sud de Bangkok.

Au *Népal* une épidémie s'est produite dans la région de Katmandu qui a causé 1 950 cas et a duré 14 semaines (de juillet à novembre).

Etant donné que le choléra a été absent du *Pakistan occidental* pendant les derniers dix ans, son apparition en novembre présente un intérêt considérable. Des cas (dont le nombre n'est pas connu à ce jour) se sont produits dans la ville de Rohri (district de Sukkur), dans le quartier de Lyari à Karachi et dans les districts de Dadu et Lahore.

In the lower Ganges Valley East Pakistan accounted for 20 per cent of all cases notified in 1958, only 11 per cent were recorded in the upper Ganges Valley (Uttar Pradesh and Bihar); one half of all cases occurred in the central and southern parts of the sub-continent in the States of Orissa, Madhya Pradesh, Bombay, Mysore and Andhra Pradesh; in 1957 these three areas accounted respectively for about 13, 21 and 33 per cent of all reported cases.

Among the areas in India (see map), which accounted for the highest morbidity rates (over 125 per 100 000 population), were the districts of Kalahandi (2 386 cases of 5 159 reported in Orissa), Drug (2 150 cases of 6 894 in Madhya Pradesh), the districts of East Khandesh and Nagpur in the State of Bombay, the district of Raichur (1 627 cases of 6 307) in Mysore and the district of Mahbubnagar (1 590 cases) in Andhra Pradesh.

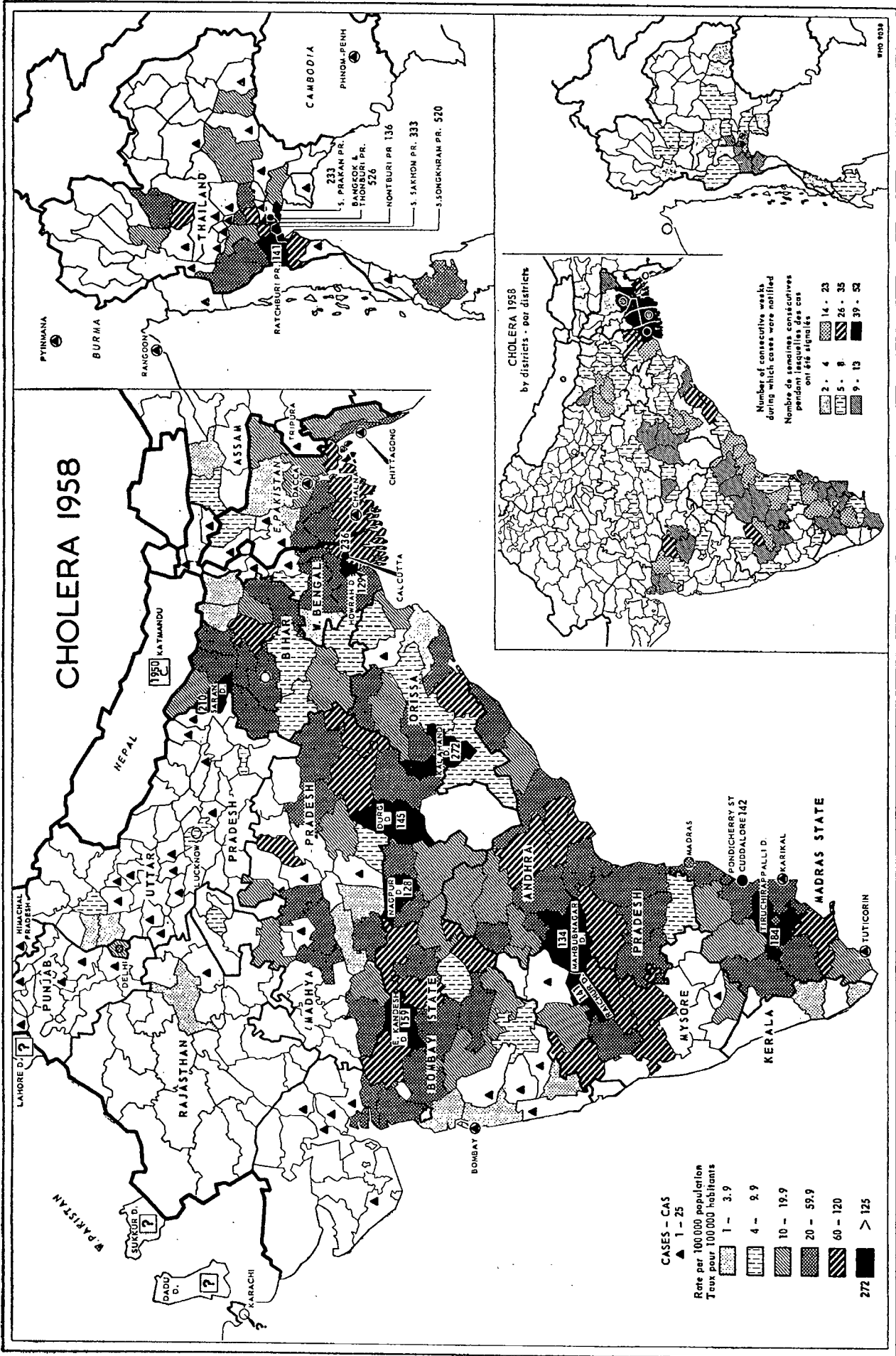
During the year not less than 4 895 cases (with 1 756 deaths) were reported in Calcutta where the disease was present every week of the year. Other ports or towns served by an international airport reported a high number of cases — Delhi (241 cases), Madras (208) in India, and Chalna (133) in E. Pakistan.

The inset map shows the districts in which cholera was present during a specified number of consecutive weeks. As usual the disease was present in 1958 for 39 or more consecutive weeks in the lower Ganges area (W. Bengal and E. Pakistan) and also in the coastal districts of Ganjam in Orissa (for 34 weeks) and Srikakulam in Andhra Pradesh (28 weeks).

In May 1958 cholera broke out in *Thailand* where the disease had been absent since 1949. The epidemic reached its peak in June. Of the 9 396 cases notified in the country 6 175 were recorded in Bangkok and the neighbouring Thonburi Province considerable number of cases was also reported west of this area and in the coastal provinces south of Bangkok.

In *Nepal* an epidemic occurred in the Katmandu area, accounted for 1 950 cases and lasted for 14 weeks (from July to November).

In view of the absence of cholera during the last ten years in *West Pakistan* it is of special interest to note the appearance of the disease in November. Cases (number not known, so far) occurred in the town of Rohri (Sukkur District) in the Lyari area of Karachi and in the districts of Dadu and Lahore.



? nombre de cas — inconnu / number of cases not known

**STATIONS TRANSMETTANT LES BULLETINS ÉPIDÉMIOLOGIQUES RADIO-TÉLÉGRAPHIQUES DE L'OMS
WIRELESS STATIONS TRANSMITTING WHO RADIO-TELEGRAPHIC EPIDEMIOLOGICAL BULLETINS**

Station	Indicatif d'appel Call Sign	Fréquence kc/s Frequency	Heure d'émission GMT Time of Emission	Jour Day	Emission en anglais, sauf indication contraire -- in English, unless otherwise indicated.
Bulletin épidémiologique radiotélégraphique quotidien de l'OMS Daily Epidemiological Radio Bulletin of WHO					
Genève-Prangins	H B A *	82.05 *	08.00	Quotidien Daily	Français — French
	H B X 76	6 945	08.00		
	H B O 41	11 402	08.00		
	H B O 88	18 950	08.00		
	H B O 44	14 538	08.00		
	H B O 88	18 950	15.00		
	H B V 30	20 190	08.00		
	H B O 34	14 462	15.00		Français — French
Bulletin hebdomadaire de la Station d'Informations épidémiologiques de l'OMS, Singapour Weekly Bulletin of the WHO Epidemiological Intelligence Station, Singapore					
R.N. Wireless Station, Kranji (Singapore)	G Y S	112.85	15.30, 19.30, 23.30	Jeudi Thursday	Emission de 15.30 en CODEPID et en clair; toutes les autres émissions en clair 15.30 Emission in CODEPID and in clear; all others only in clear
	G Y S 2	4 334	19.30, 23.30		
	G Y S 3	6 481	15.30, 19.30, 23.30		
	G Y S 4	8 630	15.30, 19.30, 23.30		
	G Y S 5	12 781.5	15.30, 19.30, 23.30		
	G Y S 6	17 266.4	15.30		
	G Y S	112.85	03.30, 07.30, 11.30	Vendredi Friday	
	G Y S 3	6 481	03.30		
	G Y S 4	8 630	03.30, 07.30, 11.30		
	G Y S 5	12 781.5	03.30, 07.30, 11.30		
	G Y S 6	17 266.4	03.30, 07.30, 11.30		
	G Y S 7	22 533	03.30, 07.30, 11.30		
	Central Radio Station, Saigon	X V Y 33	11 991	Minuit Midnight	
Sandakan Radio, North Borneo	V Q B 2	458	05.00	Dimanche Sunday	en clair in clear
Hong Kong (Hunghom)	V P S 2	435	01.30	Vendredi Friday	en clair in clear
Hong Kong (Hunghom)	Z E L 24	12 325	01.30		
Tokyo Kemigawa	J J C	39.35	13.30	Vendredi Friday	en clair in clear
	J J C	8 702	13.30		
Tokyo Usui	J J C	4 316	13.30	Samedi ⁷ Saturday ⁷	
		13 051.5	13.30		
		17 069.6	13.30		
		22 539	13.30		
Karachi Radio (Malir)	A S K	194	08.30, 16.30	Samedi Saturday	en clair ³ in clear ³
Madras Radio	V W M	158	17.30	Samedi Saturday	en clair in clear ³
Tananarive Alarobia (Intercolonial Stations, Tananarive)	H Y T 83	17 400	06.00	Samedi Saturday	en CODEPID et en clair ³ in CODEPID and in clear ³
	F Z X 28	8 185			
Colombo Radio	4 P B	482	06.00, 13.30	Vendredi Friday	en clair in clear
	4 P B	8 742			
Ceylon Naval Radio	G Z H	123	11.00, 19.30 ³	Vendredi Friday	en clair in clear
	G Z H 4	8 726	11.00, 19.30 ³		
	G Z H 5	12 988.5	11.00, 19.30 ³		
	G Z H 6	16 978.4	11.00, 19.30 ³		
	G Z H 7	22 587	11.00		
	G Z H 3	6 519.5	19.30 ⁴		
Radio-Station Manila	D U H 2	6 170	{ 21.05, 02.45 } { 08.45, 14.40 }	Quotidien ⁵ Daily ⁵	en téléphonie ³ in telephony ³
	D Z F M	710			
	D U H 5	11 840			
Manila Radio DZS	D Z S	2 598	{ 00.30, 03.30 } { 06.30, 09.30, 12.30 } 00.30, 03.30, 06.30	Lundi - Samedi ⁶ Monday-Saturday ⁶ Dim.-Sunday	en téléphonie ³ in telephony ³
Bulletin épidémiologique hebdomadaire du Bureau régional de l'OMS, pour la Méditerranée orientale, Alexandrie Weekly Epidemiological Bulletin of the WHO Regional Office for the Eastern Mediterranean, Alexandria					
Abu-Zabal (Cairo)	S U W 48	10 594	08.00	Mercredi et Vendredi ⁸ Wednesday and Friday ⁸	
	S U W 66	13 813	12.15		

¹ Renouvelé tous les vendredis.

² Le samedi et le mercredi le Bulletin hebdomadaire de la Station de Singapour est suivi de renseignements complémentaires reçus la veille de Genève-Prangins.

³ Après le bulletin météorologique.

⁴ Renouvelé tous les samedis.

⁵ Renouvelé tous les vendredis. L'émission comprend aussi les émissions épidémiologiques concernant les pays des Amériques.

⁶ Le vendredi, le bulletin de l'OMS à Genève suit immédiatement le bulletin du Bureau régional.

⁷ Suivi de renseignements complémentaires extraits du Bulletin épidémiologique radiotélégraphique quotidien de l'OMS (Genève-Prangins).

⁸ Du 1 au 28 février 1959.

¹ Renewed on Fridays.

² On Saturdays and Wednesdays, the Weekly Bulletin of the Singapore Station is followed by additional information received from Genève-Prangins on Fridays and Tuesdays respectively.

³ Following the weather report.

⁴ Renewed on Saturdays.

⁵ Renewed on Fridays. The broadcast also includes epidemiological information regarding countries of the Americas.

⁶ On Fridays, the WHO bulletin from Geneva follows immediately after the bulletin of the Regional Office.

⁷ Followed by additional information extracted from the Daily Epidemiological Radio Bulletin of WHO, Genève-Prangins.

⁸ From 1 to 28 February 1959.